

20/05/09

## Ryuta Amae. Munich - Traversee - fino al 4/7/09



Ryuta Amae Topology - Mythology Gallery Traversee is very pleased to present the exhibition Topology - Mythology by Ryuta Amae. Ryuta Amae, born 1967 in Oiso, Japan, lives and works in Paris and Brussels. He successfully absolved the Ecole National Supérieure des Beaux-Arts Paris.

In 2002 he was awarded with the Prix Altadis.

Meanwhile Ryuta Amae's computer generated photography works has become part of various public collections as Centre Pompidou, the Musée National d'Art Moderne, the Maison de la Photographie Européenne and the Hypo Kulturstiftung. It's by breaking and entering that our eye penetrates in the vast landscapes of Ryuta Amae, since our body never gets to know these landscapes.

These apparently sincere representations without any tangible reference undermine the conversion system between the real and the perception of the real.

The idea of reality has been, up to now, linked to the image we get through our sensory organs; the tendency of our surroundings to get virtualized - and the following uncertainty to tell the right from the wrong - involves all materials around us.

The dissolution of this correspondence generates hybrid -parasitic objects and identities within a non-material reality, industrialized through media. The landscape becomes mental more than ever; a cultural object withdrawn from nature in order to be dedicated to the thought, a latent territory within the consciousness, rear side of a world, which does not seek to judge the imaginary and the real.

Thus Ryuta Amae's visions work on our individual or common fictions in order to give them a body.

Reversely to the optical and analogical reproduction of a photographic work, computer-generated image doesn't collect necessarily the signs left by a luminous trace; it invents its own substance through a data-calculation, which is foreign to the visible material.

These images are result of a technological synthesis which consists of photographed or scanned paintings and models retouched by computer and computer-generated images made through a 3-D software. Their mise-en-scène divides up the perspective by several points of view and composes unprecedented harmonies between the motives and combines the plans up to a maximum topographical implosion.

To feed this rhetorical graphic Ryuta Amae works the paintbrush indifferently in all palettes, be it pictorial or electronic. Nathalie Leleu The author is assignee of conservation at the MNAM/CCI - Centre Georges Pompidou and author of diverse texts and articles on history of art; she teaches at the Paris IV Sorbonne and at the Sciences Po, Paris. Opening: May 20 2009, h 17:00 - 21:00 Traversee Turkenstrasse 11 - Munich Fr.: 11:00 - 19:00 Sa.: 11:00 - 17:00 Free admission



**RYUTA AMAE**

dal 20/5/09 al 4/7/09

**Traversee**

Munich, Turkenstrasse 11

[Guarda evento sulla mappa](#)



Gorilla Mag

Photogallery

Contatti

Rss

Tags



Arte Vs Pubblico. Dal satanismo alla massoneria

GORILLAMAGAZINE.IT

INAUGURAZIONI



Loop video art fair.  
Barcelona - Hotel  
Catalonia - fino al 31/5/09



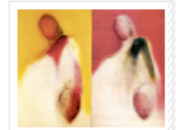
Torsten Warmuth. Berlin -  
Johanna Breede  
Photokunst - fino al  
25/7/09

[Leggi tutti »](#)

NEWS

Mitografie, l'arte contemporanea nella capitale

Dei, santi, mostri, creature leggendarie abitano "Dentro Roma" un Pantheon disordinato. Le visioni di 16 grandi artisti, sempre prossime alla ...



"Medea" di Euripide" e "Edipo a Colono" di Sofocle al Teatro Greco di Siracusa

Mito nel Mito: Edipo secondo Giorgio Albertazzi. Entra in scena, cieco per sua mano, acciaccato, sorretto dalla devota figlia Antigone. ...



[Leggi tutti »](#)